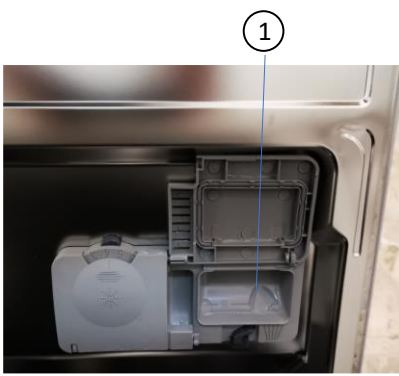


Operation dishwasher



1 tab tray

2 on/off

3 program selection

4 start/break

- check cleanliness of sieve under harness basket
- remove the tab from cardboard under the sink and unpack it from foil
- place tab in tray 1 and press lid well
- turn on dishwasher with button 2
- use button P (3) to select the program (normal P1)
- start dishwasher with button 4 and close door
- dishwasher whistles once at the end of the program
- turn off dishwasher with button 2